

FAMPO'S BICYCLE DEMAND ANALYSIS & BIKE/PED COUNTING PROGRAM

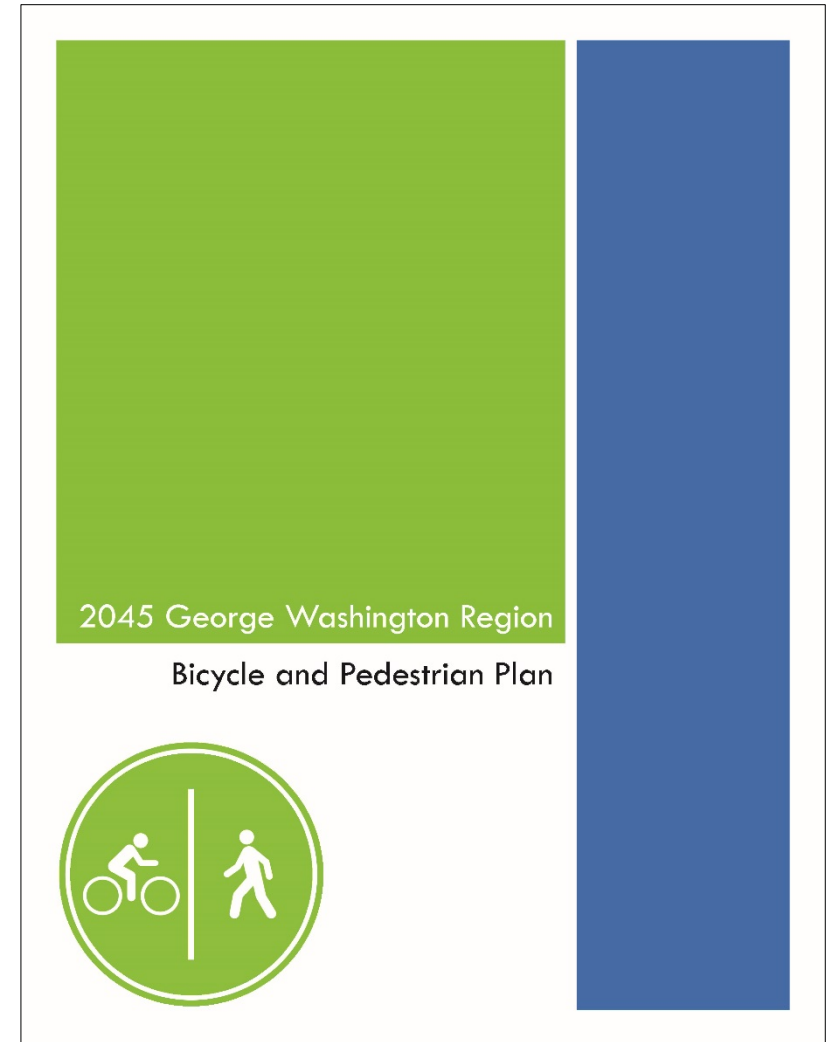




BICYCLE DEMAND ANALYSIS

Bicycle Demand Analysis Background

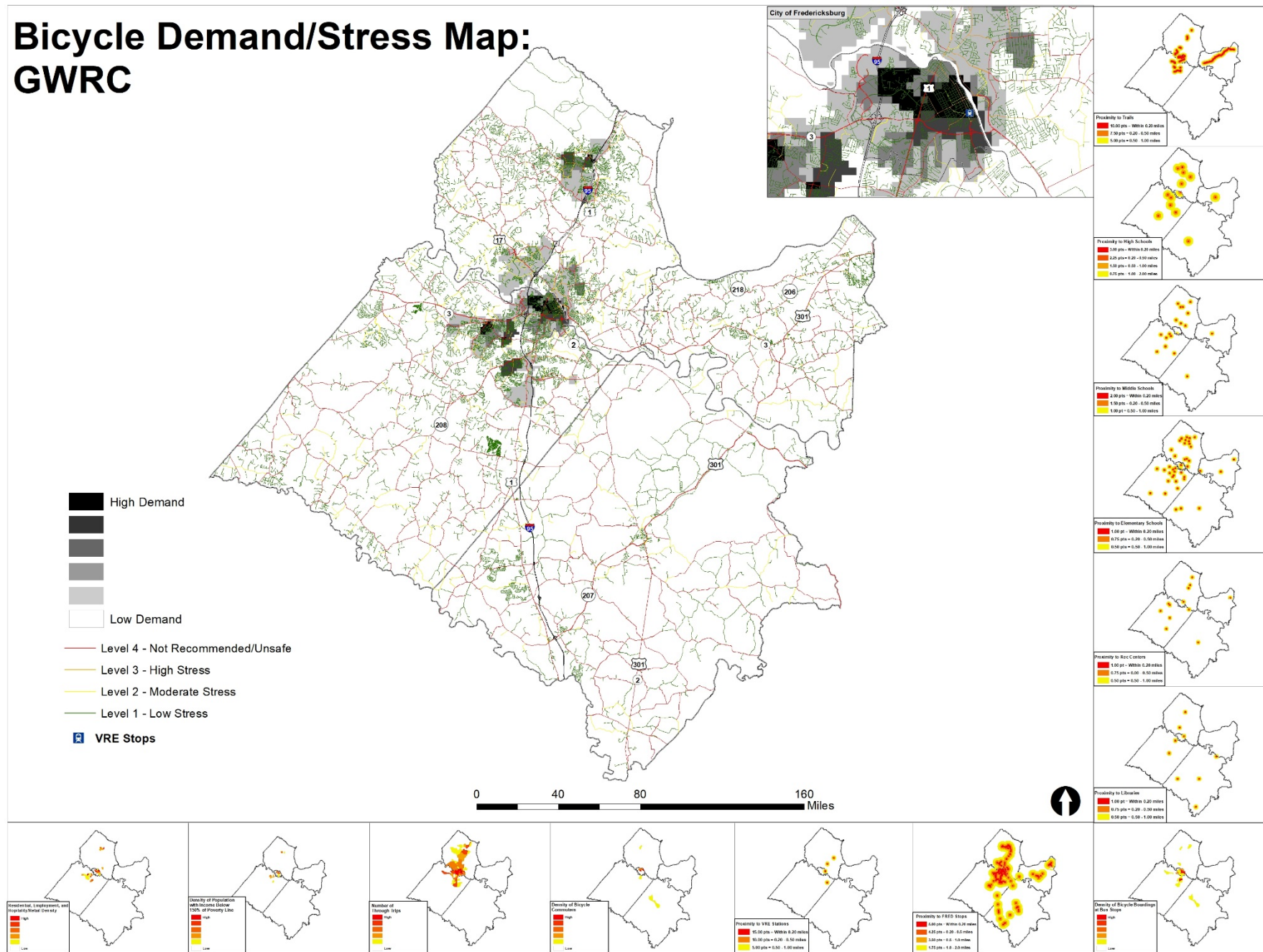
- Updating regional bike/ped plan
 - Complement to Bicycle Level of Stress (BLOS) analysis
- Provides a method of prioritizing bicycle improvements
- Overlay BLOS with demand analysis to see where to get the biggest bang for the buck

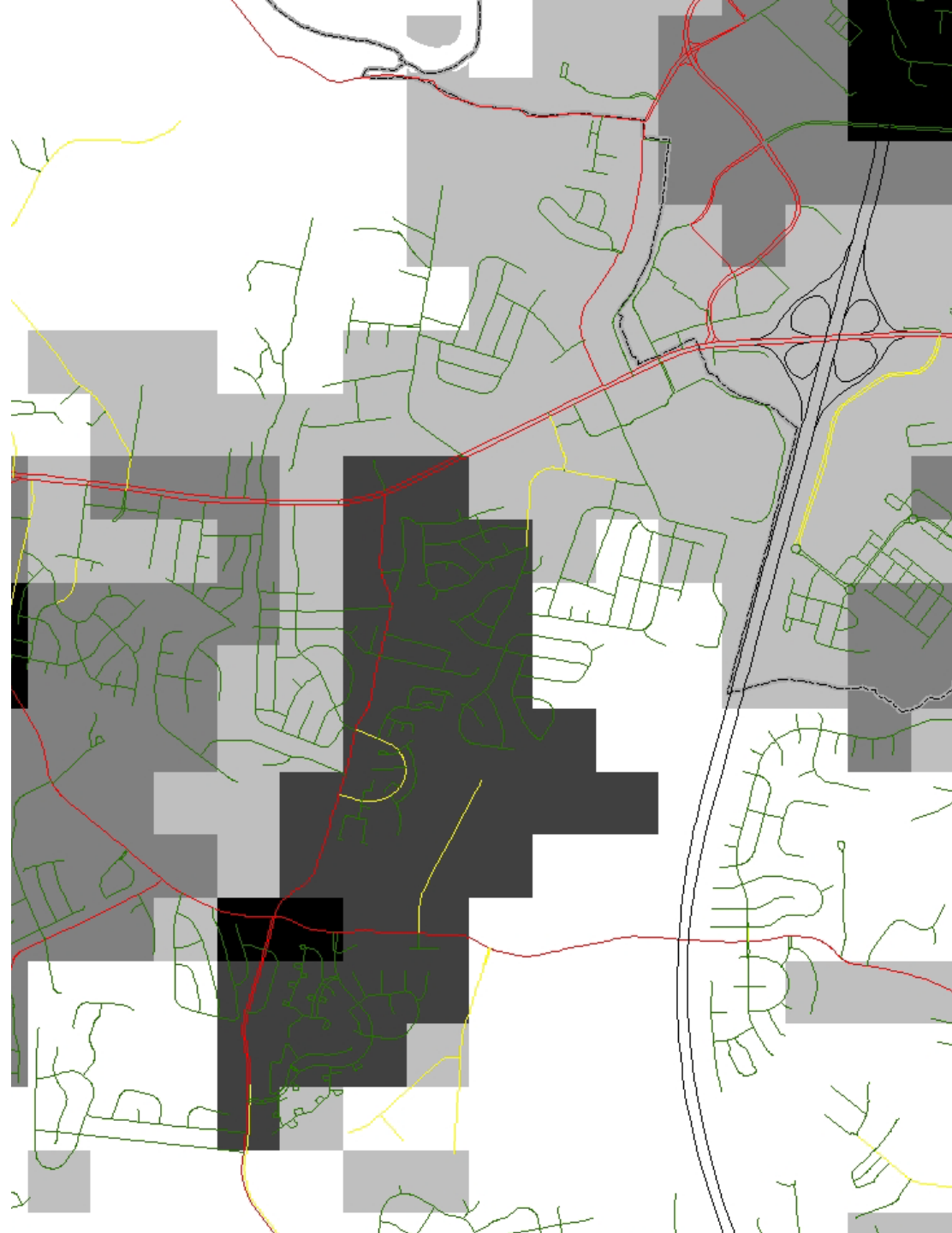


Bicycle Demand Analysis Methodology

- Based on Montgomery County, MD
- 16 factors that typically correlate with bicycling
 - Census data (i.e., residential density)
 - Proximity to existing bicycle infrastructure and transit stops
 - Proximity to government facilities and schools
 - Through trip demand
- Factors weighted based on perceived importance
- More information:
 - <https://www.fampo.gwregion.org/wp-content/uploads/Chapter-4.pdf>

Bicycle Demand/Stress Map: GWRC







BIKE/PED COUNTING PROGRAM

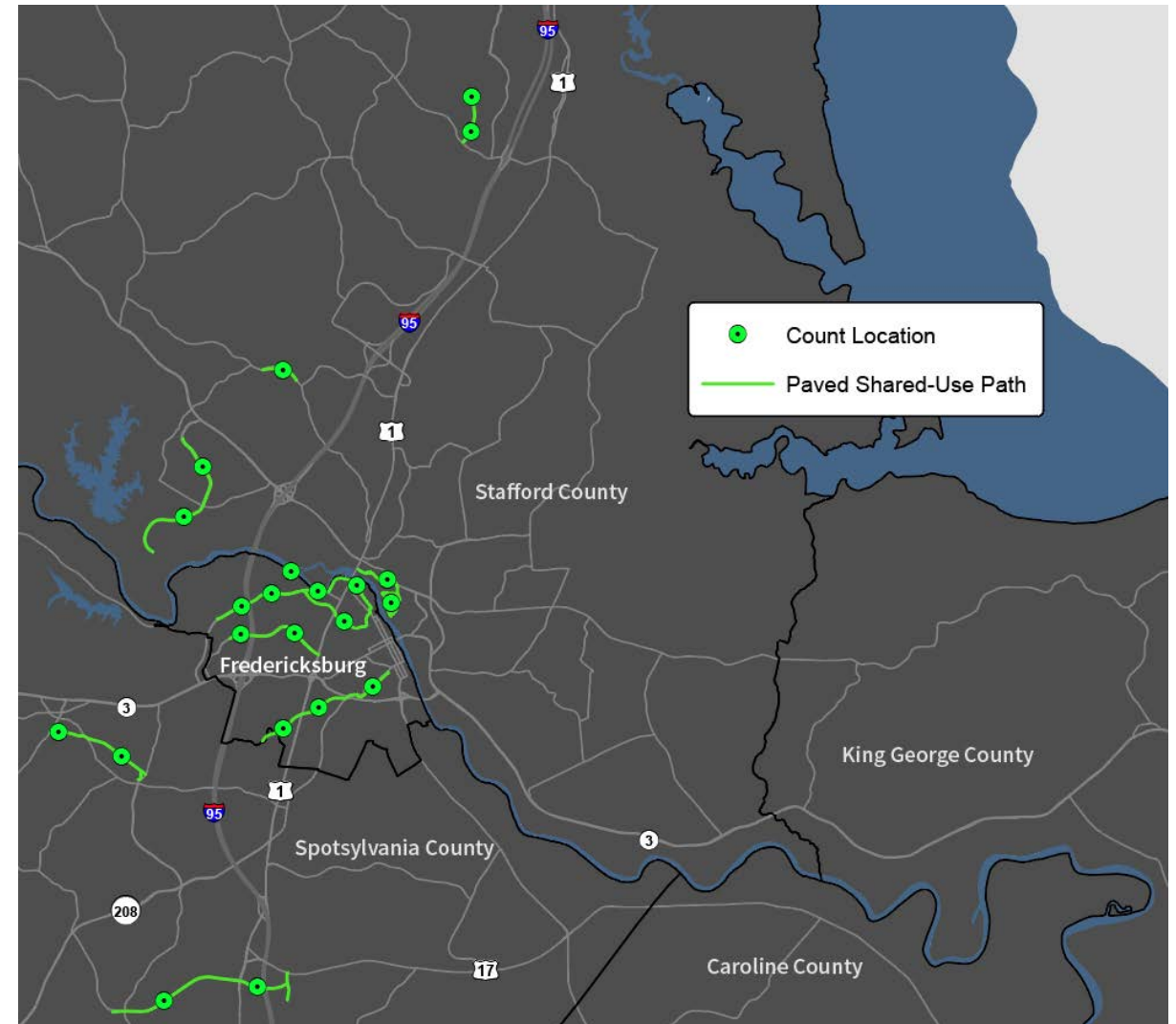
Program Overview

- Counting program began in 2017
- Goals
 - Track numbers and trends over time and report those to the public and decision makers
 - Evaluate the impacts of specific projects
 - Make smarter investments
 - Smart Scale application support



Counting Locations

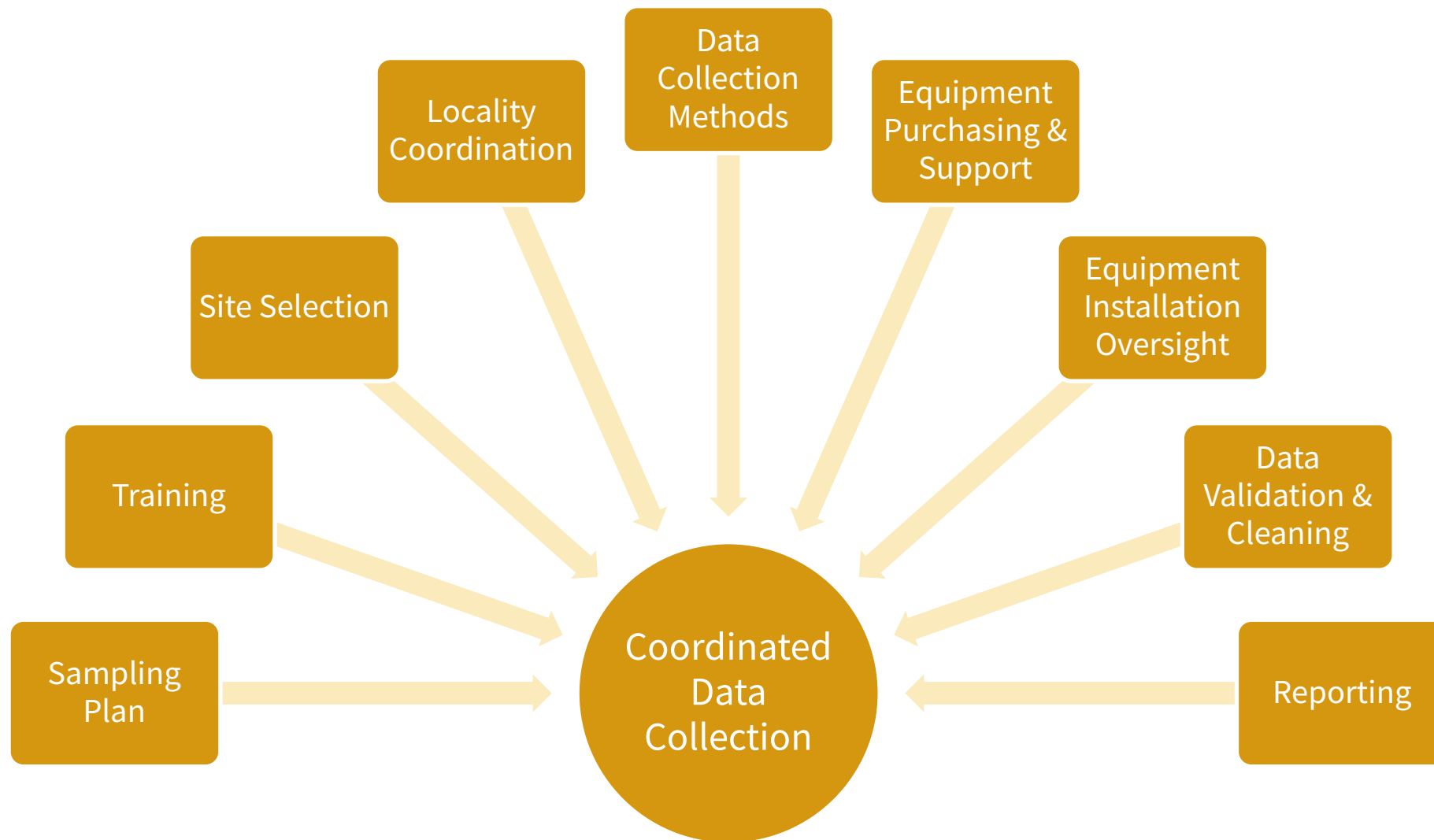
- 23 counting sites in the region on paved shared-use paths
- Two weeks of data per year at each site
 - Considered minimum for accurate ADT calculation




Counter Equipment



Counting Program Elements





Nicholas Quint
Principal Planner
Fredericksburg Area Metropolitan Planning Organization
quint@gwregion.org